



This year Gripple is taking part in the Master Cutler's Challenge which is raising funds for Weston Park Cancer Charity. Now, more than ever this very great charity needs our support.

*"We're expecting an overall shortfall of around £1.5 million, as a result of the coronavirus pandemic and as a charity solely funded through donations we face greater challenges than ever before. But, patients and families need our help and support service more than ever".*

The challenge will now run over into next year too due to the pandemic, with all money raised this year counting towards the final total, so it's important to continue raising money.

## MASTER CUTLER'S CHALLENGE 2020/2021

### TOTAL RAISED SO FAR OVER £9,000

#### HERE'S HOW YOU DID IT . . .

There has been an amazing amount of fundraising happening throughout this year despite the very difficult circumstances.

Many raffles have been organised by various departments including P&C and Internal Sales, and this year's Christmas Raffle looks to be the most successful to date with ticket sales exceeding £2,000.

The Gripple Grads' Hollywood Charity Ball raised a fantastic amount, and kept us entertained in lockdown by hosting virtual zoom quizzes.

Back in July, Diane from Gripple Hellaby 'braved the shave' and had all her hair shaved off. In Diane's words 'Weston Park Cancer Charity means a lot to many people'.

Jack Durham set himself the '30 by 30 challenge' aiming to lose 30 kg by his 30th birthday, Jack narrowly missed his target but has endeavoured to reach it by the end of the year.



Tim Barker and the engineering team are continuing to raise a fantastic amount of money by converting items that were destined for scrap into cash.

Due to the corona virus, people found new ways to raise money with sales of face masks, protective screens and no touch door openers.

Other fundraising events have included the Biggest Loser Competition, Where's Facey? picture competition and selling potted plants!



## SOME OF OUR FUNDRAISING & EVENTS FROM 2020



#### RACE FOR LIFE

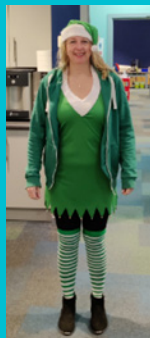
Kelly Clark pushed her 35 kg dog, Truey in his stroller for 5 km for **Cancer Research UK**.

With Covid restrictions this was an individual event, rather than a group one, so Kelly had her local route mapped out and was tracked on her way around.

#### RIVERSIDE 'ELF' Day

The 'Elf' Day was a huge success with people taking part in fancy dress. They also organised a bake sale, raffle, quiz, and an Elf Name Generator – naughty or nice!

They're already looking to make next years even bigger and better!



#### RUN FOR DEMENTIA

Louise Hill raised funds for the **Alzheimer's Society** by running 100 miles in one month, in memory of both her grandads.

#### POPPY APPEAL

Another great collection for this very deserving charity, **The Royal British Legion**. John Williams made a fantastic contribution by running 150 k in one month, to raise money.

#### SNOWFLAKE APPEAL

Once again we have sponsored a snowflake at **Sheffield Childrens Hospital**. If you pass by, look out for it!

#### SAMARITANS PURSE - OPERATION CHRISTMAS CHILD

Joe Hardy and his team have been busy sending out shoe boxes filled with gifts which will be sent to children in need around the world.

#### COAST TO COAST

Dave Eastwood, along with 34 others, cycled from Morecambe to Bridlington over 3 days to raise money for **Age UK**

#### RIVER DON CLEAN UP

Organised by Dorota in Marketing to clean up the river Don next to Riverside, along with 30 plus volunteers. This was a great success with amazing results for us all to see.

#### HAIR DONATION

Leida Cammidge donated 9 inches of her own hair to **The Little Princess Trust** that provides real hair wigs to children suffering from cancer.

## MORE THAN £7,500 HAS BEEN RAISED FOR YOUR CHOSEN CHARITIES



# HOW GRIPPLE HAS HELPED DURING THE CORONA VIRUS PANDEMIC

## SOCIAL DISTANCING T-SHIRTS.. WITH A TWIST

To drive home the social distancing message at work, Gripple designed new workwear T-shirts which put a Gripple 'twist' on traditional Yorkshire expressions. The T-shirts proved to be extremely popular with all profits going to NHS charities.



## LAPTOPS FOR KIDS

Gripple has donated 65 laptops to local Sheffield schools enabling children from disadvantaged backgrounds to have access to the technology they need to participate in remote learning. This included 5 going to the wonderful Woolley Wood School, where previously we have renovated their playground. David, the Headteacher is hugely appreciative of our donation.



## FACE MASKS

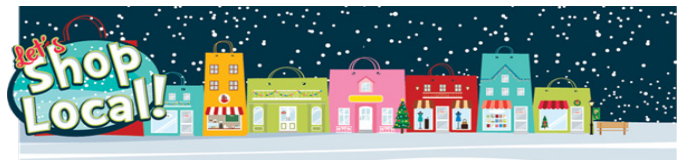
Diemante has been extremely busy producing face masks free of charge for all Gripple employees, with any money made from extras sold going to charity.

## GLIDE HOUSE KITCHEN

Gripple showed its support of this nationwide campaign by offering free lunches during half term, to children from disadvantaged families.

## LOCAL FOOD BANKS

Now more than ever food banks need our support, with thanks to Dan Awoko, Iwona, Gripple Automation, and others for organising collections throughout our sites.



## GETTING BACK ON TRACK CAMPAIGN

In light of the global challenges presented by COVID-19 and the outstanding, tireless work being done by healthcare workers around the world, Gripple supported healthcare charities in core regions with a £10,000 donation.

## SUPPORTING OVERSEAS HOSPITALS

We decided to show our solid support to hospitals local to our overseas colleagues with donations made to Bergamo hospital in Italy and Obernai's local hospital in France.

## Listed below are all the charities Gripple has helped support in 2020

Raleigh Expedition	Weston Park Cancer Charity	Southern Light Community
St Luke's Hospice	NHS Charities	Sheffield MIND
Rotherham Hospice	Mums in Need	Age UK
Issabelle's Appeal	Age UK Barnsley	British Heart Foundation
Bluebell Wood Childrens Hospice	Sheffield Children's Hospital	Cancer Research
Sheffield Disabled Fishing Group	Hallamshire Hospital, Haematology	280th Norton Scout Group
Brightbox Makerspace	Department	Royal British Legion
When You Wish Upon a Star	Blyth Cricket Club	St John's Ambulance
Ethel Trust	Sheffield Sea Cadets	Todwick & Kiveton Rescue Center
Circus Starr	Kids Cancer Charity	Samarians-Operation Christmas
Yorkshire Air Ambulance	Boys and Girls Clubs South Yorkshire	Child
Naya's Wish	Tia Rescue	Enable Sheffield
SHINE	Life After Crisis	Notton Village Hall, Wakefield
Health Tree Foundation	Douglas Bader Foundation	Motor Neuron Disease Association
Meadowhead School Trust Choir	Baby Basics	Thornbury Animal Sanctuary
William Reckless	Little Princess Trust	Handsworth Inn
Bergamo Hospital	Alzheimers Society	Sepsis Trust
Obernai Hospital	Stroke Association	Macmillan Cancer Care
Tom Moore's walk for NHS	Edale Mountain Rescue	Bobby Moore Fund
Whirlow Hall Farm Trust	Mind the Gap	Laptops for Kids Sheffield
Ashgate Hospice	Beyond Bea Charity	British Red Cross
Hope City Foundation	Bone Cancer Research	NSPCC
SRSB	Guide Dogs for the Blind	

## Charity of the Period

Every period we highlight a specific charity to receive a £500 donation.

Charities chosen this year:

- Health Tree Foundation
- Ashgate Hospice
- Age UK Barnsley
- Hallamshire Hospital, Haematology Dept
- Alzheimer's Research
- Macmillan Cancer Care
- Motor Neuron Disease Association
- St John's Ambulance

Please let us know if there's a charity you would like to put forward in 2021

Many thanks for your continued support and we look forward to an exciting 2021

The Gripple Charities & Community Team

